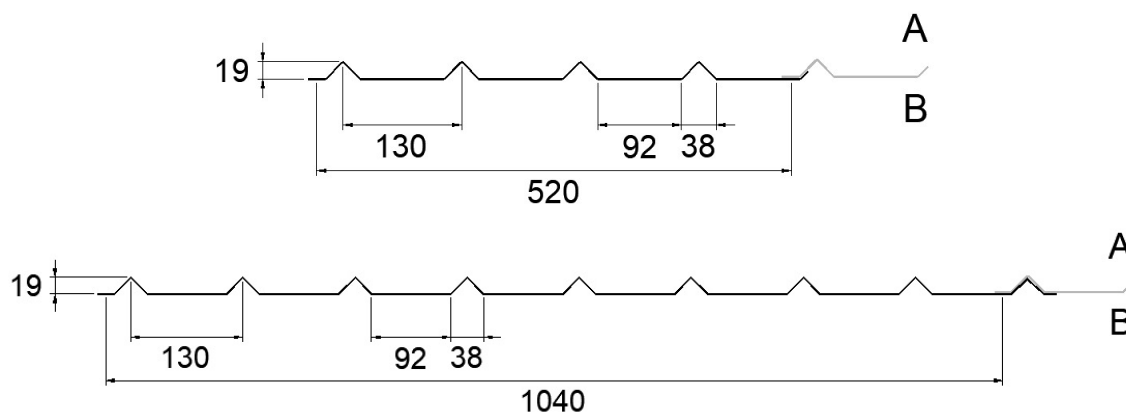


## TECHNICAL DATA SHEET

### SAB-Pyramid 19/520 and SAB-Pyramid 19/1040



Gauge	Weight
0,75 mm	7,04 kg/m <sup>2</sup>
0,88 mm	8,26 kg/m <sup>2</sup>

#### STEEL GRADE

Yield strength minimum 280 N/mm<sup>2</sup>, zinc layer can be Z, AZ, ZA or ZM.

#### SUSTAINABILITY

Environmentally relevant product information (EPD) are published on [www.sabprofil.com](http://www.sabprofil.com).

#### QUALITY CONTROLE

We guarantee that the product has been produced according the valid standards and directives

#### REACTION TO FIRE

Incombustible, class A1 according to EN 13501-1 for coating systems unto 65 µm

#### SPANS

SAB advices for an as flat as possible façade a maximum load span of 1500 mm. This load span is valid in all wind areas, vacant and till a construction height of 15 m.

Maximum length 6000 mm.

#### STANDARDS

Production according ISO 9001, ISO 14001, ISO 45001 and BES 6001

Tolerances according PPA-Europe Quality Regulations

Steel thickness: EN 10143 is used as a basis for the gauge tolerances, applied to the steel core only and excluding zinc layer and organic coating.

IJsselstein, June 2025